

A woman with long dark hair, wearing a light-colored sweater, stands in a field of red poppies. She is looking down at her hands, which are held out in front of her. The background is a bright sunset with the sun low on the horizon, creating a warm, golden glow. The field of red flowers is in the foreground, slightly out of focus.

Nestle in nature

Gurgaon Greens
Sector 102, Gurugram

3 BHK Apartments
4 BHK Duplex Penthouses

Overview

Somewhere between the city and the serene countryside, awaits a lifestyle even the upper crust craves. Soaring high above the lush green surroundings, the arresting residential towers at Gurgaon Greens have been designed to make the most of the landscape. From spacious indoors to colour-coded outdoors, there's enough to define 'never-seen-before'.

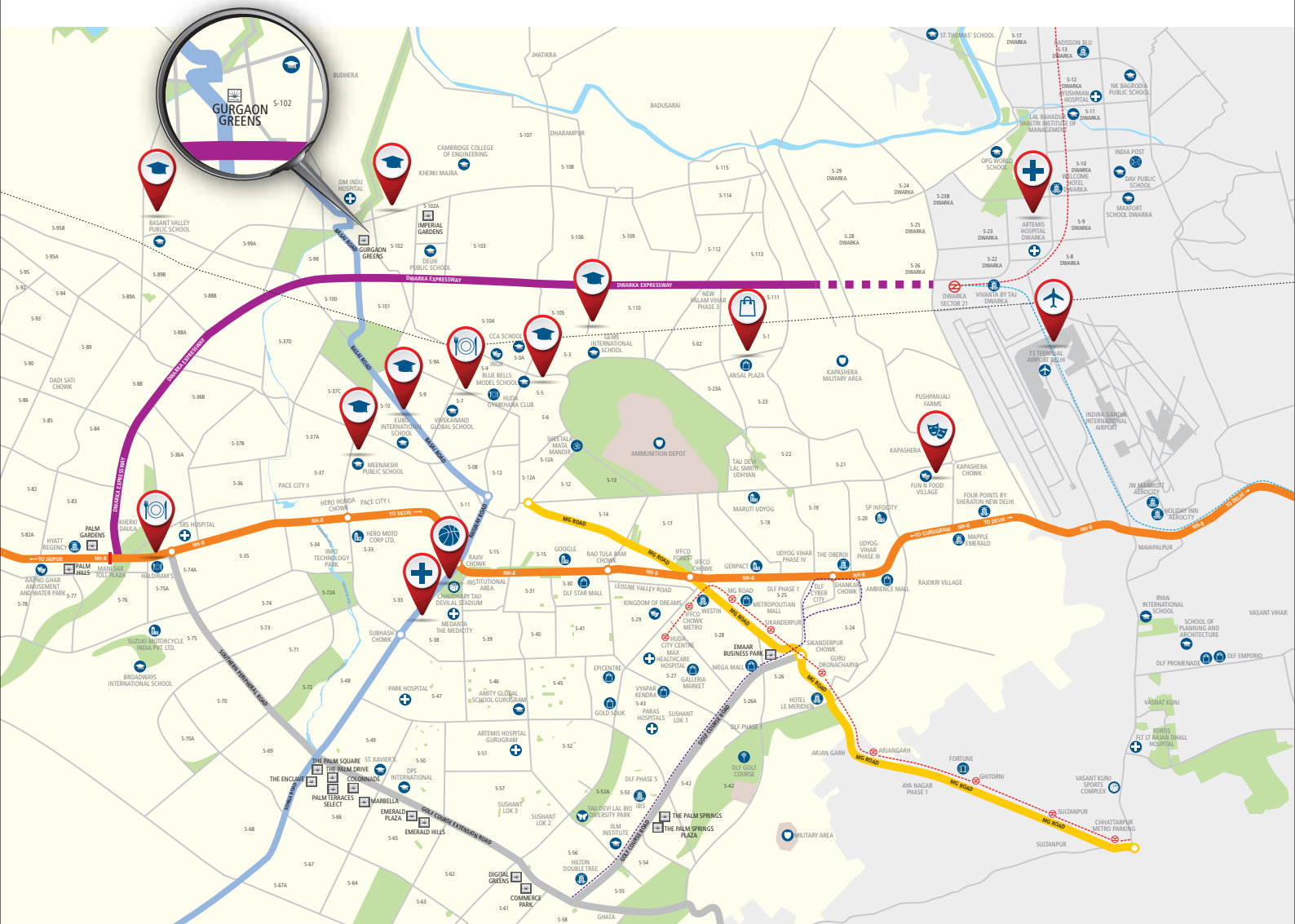
The 13.53 acres gated community comes equipped with a future-ready infrastructure, power back-up and modern shopping and recreation choices. Residents can look forward to long walks on impeccably paved roads, through wide open green spaces.



Artistic Impression

Location

GURGAON
GREENS



- SCHOOL/ COLLEGE
 - AIRPORT
 - HOSPITAL
 - HOTEL
 - OFFICE
 - ENTERTAINMENT ZONE
 - SHOPPING MALL
 - SPECIAL ECONOMIC ZONE (SEZ)
 - POST OFFICE
 - SPORTS COMPLEX
 - GOLF COURSE
 - DEFENCE AREA
 - CLUB/ FOOD COURT
 - BIO DIVERSITY PARK
 - TEMPLE
- DELHI METRO --- RAPID METRO --- AIRPORT METRO --- RAILWAY LINE

Map not to scale

Gurgaon Greens offers excellent connectivity to Gurugram, Delhi and Indira Gandhi International Airport (T3). Adjoining major roads (150 meters Expressway and 75 meters wide sector road), offers quickest access to the project. The now operational railway overbridge at Basai along with its proximity to Gurugram's Business District and Delhi Public School, makes Gurgaon Greens a very well connected community.

Highlights



Artistic Impression

- 8 acres of open area
- 2 apartments per floor
- Selective units with 3 sides open
- Modern Clubhouse
- Swimming pool
- Roof top tennis court
- Kid's pool and play area
- Solar power for lighting

Master Plan

GURGAON
GREENS



Legend

- | | |
|--------------------------|--|
| A. Entry | F. Water Body |
| B. Ornamental Water Body | G. Jogging Track |
| C. Modern Clubhouse | H. MLCP and Tennis Courts |
| D. Swimming Pool | I. Gurgaon Greens Arcade at ground level |
| E. Central Greens | |



Floor Plan

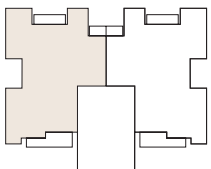
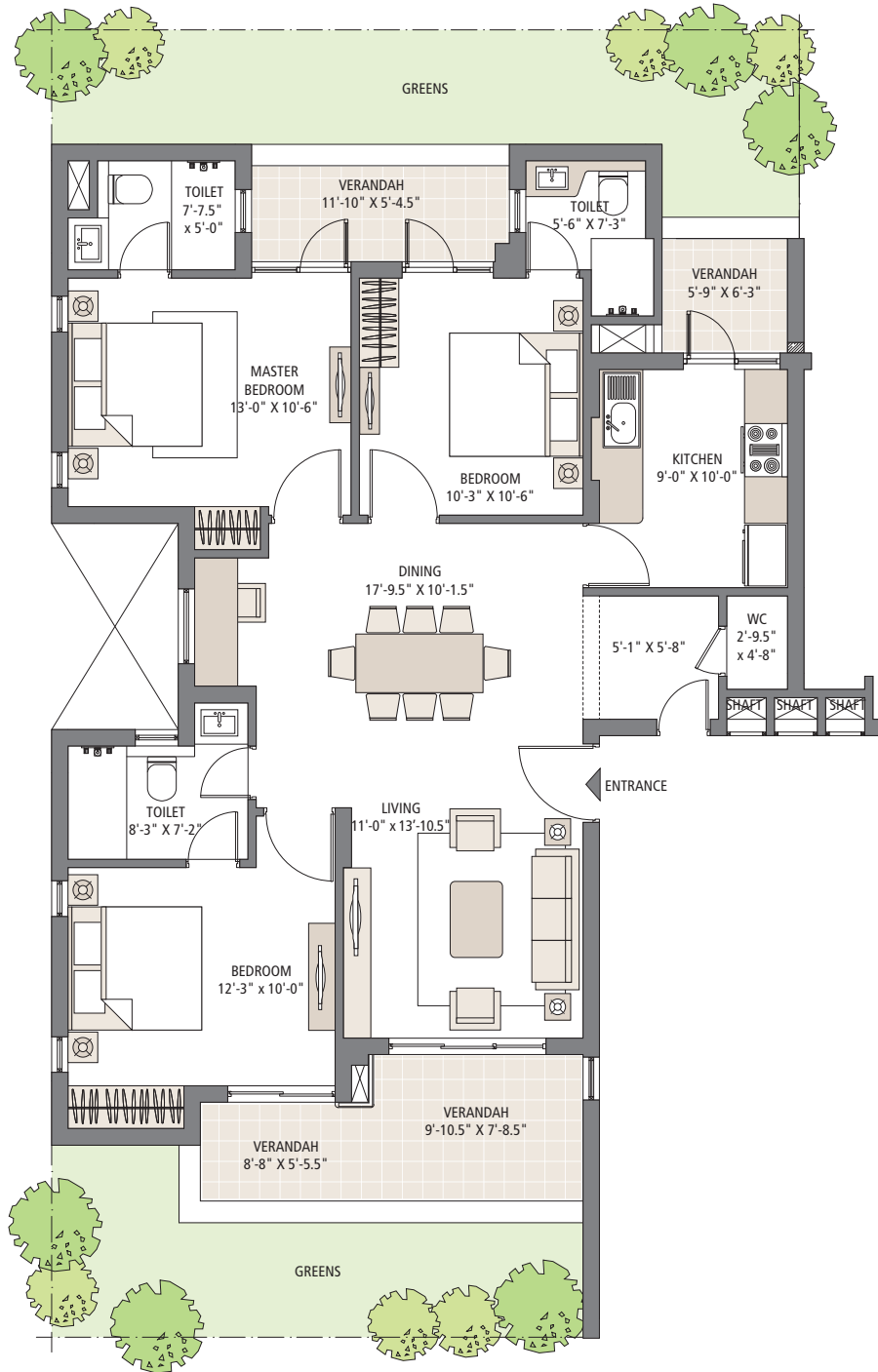
TYPICAL GROUND FLOOR

3 Bedrooms | 3 Bathrooms | Living | Dining | Front and Back Lawns

Carpet Area: 95 sq. mtr. (1,022.58 sq. ft.)

Verandah Area: 20.54 sq. mtr. (221.09 sq. ft.)

Super Area: 153.28 sq.mtr. (1,650 sq.ft.)



A revision of above plans has been applied with the authorities and same are also available for inspection before booking. Soft furnishing, cupboards, kitchen cabinets, furniture and gadgets are not part of the offering. All dimensions are from Masonry to Masonry. 1 sq. mtr. = 1.196 sq. yds. and 1 sq. mtr. = 10.764 sq. ft.

Floor Plan

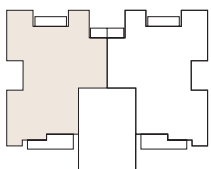
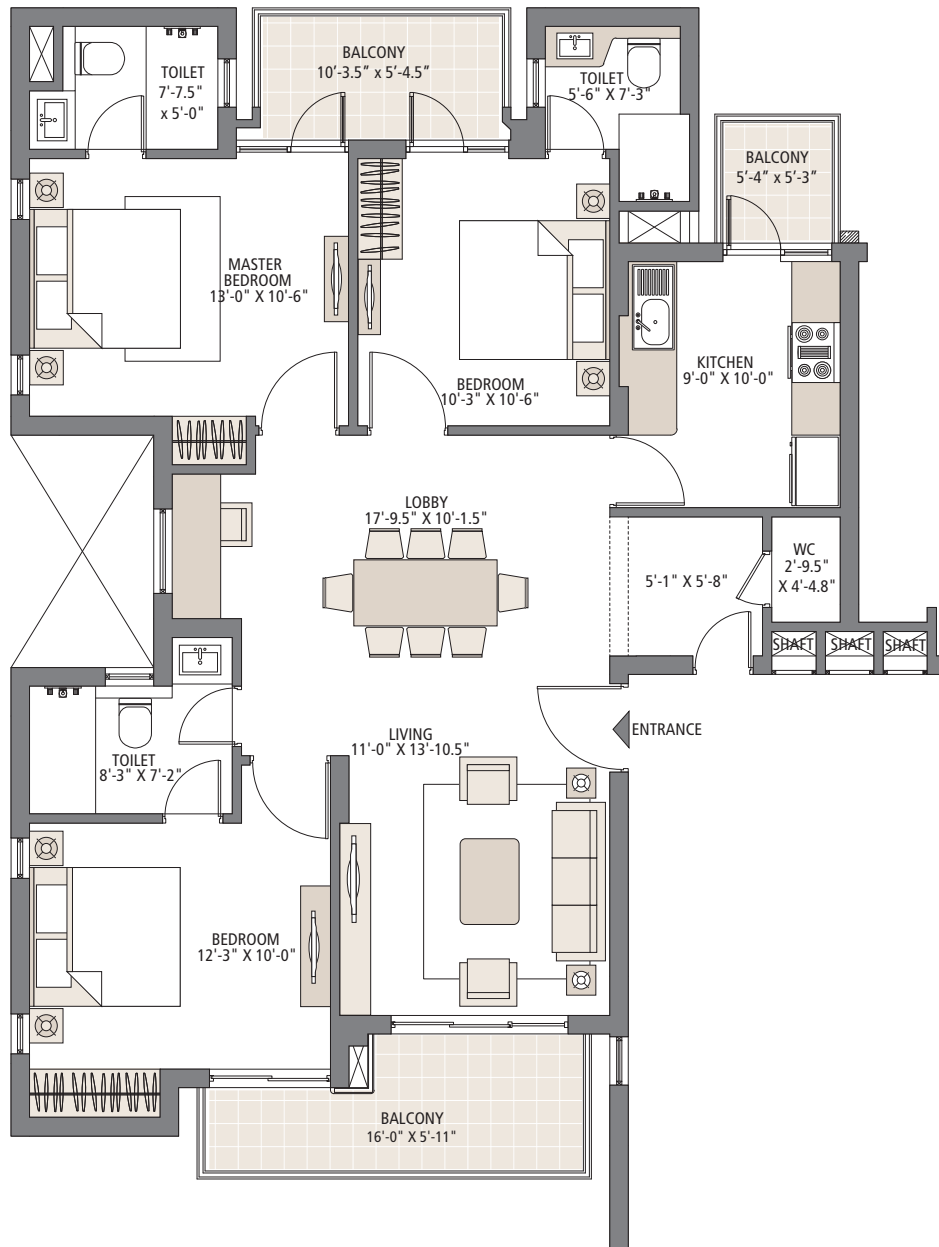
TYPICAL FLOOR

3 Bedrooms | 3 Bathrooms | Living | Dining

Carpet Area: 95 sq. mtr. (1,022.58 sq. ft.)

Balcony Area: 15.19 sq. mtr. (163.51 sq. ft.)

Super Area: 153.28 sq.mtr. (1,650 sq.ft.)



A revision of above plans has been applied with the authorities and same are also available for inspection before booking. Soft furnishing, cupboards, kitchen cabinets, furniture and gadgets are not part of the offering. All dimensions are from Masonry to Masonry. 1 sq. mtr. = 1.196 sq. yds. and 1 sq. mtr. = 10.764 sq. ft.

Floor Plan

DUPLEX PENTHOUSE FLOOR PLAN - LOWER LEVEL

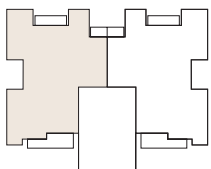
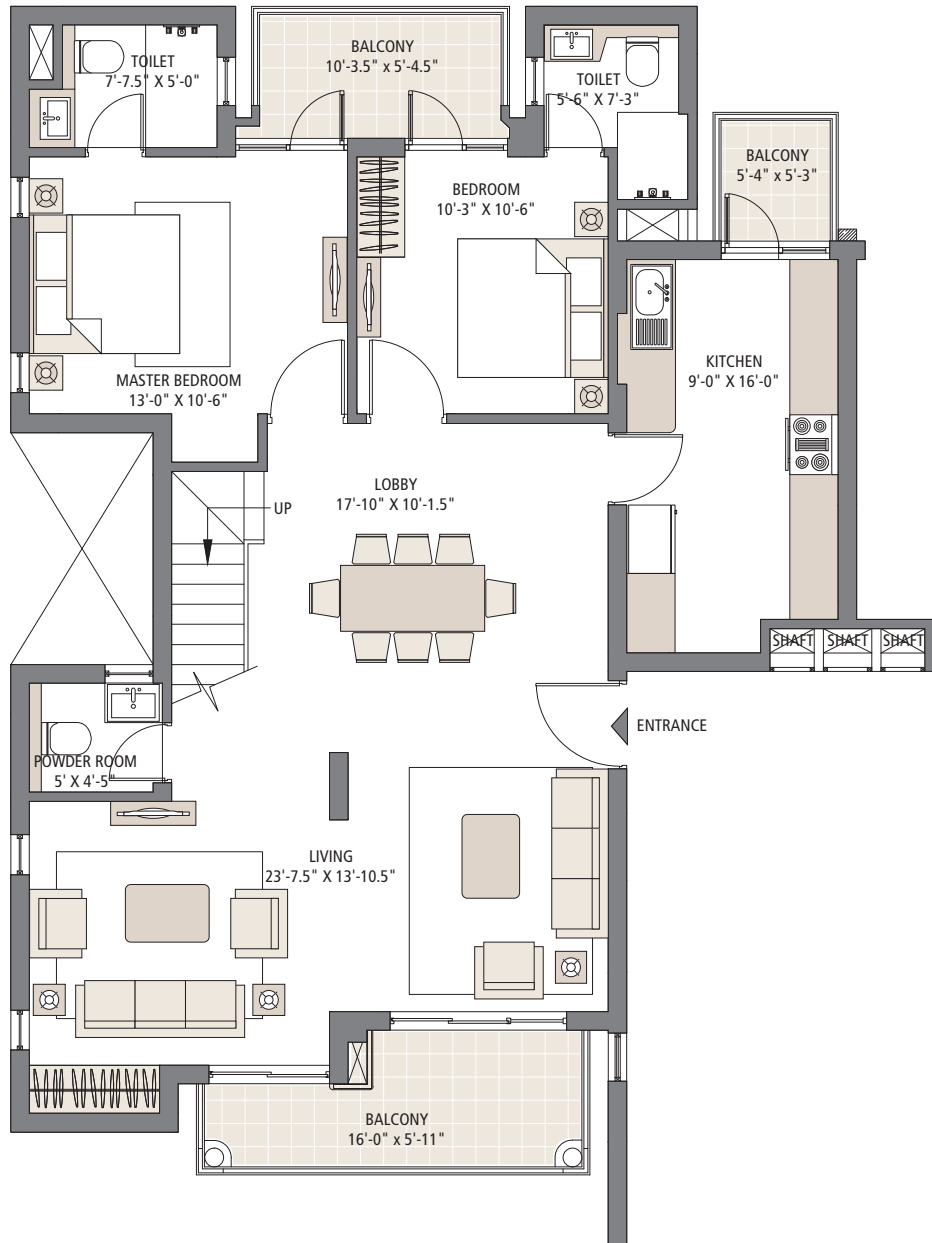
4 Bedrooms | 4 Bathrooms | Living | Dining | Family Lounge | Terrace

Carpet Area: 164.04 sq. mtr. (1,765.73 sq. ft.)

Balcony Area: 22.98 sq. mtr. (247.36 sq. ft.)

Terrace Area: 35.73 sq. mtr. (384.60 sq. ft.)

Super Area: 297.28 sq.mtr. (3,200 sq.ft.)



A revision of above plans has been applied with the authorities and same are also available for inspection before booking. Soft furnishing, cupboards, kitchen cabinets, furniture and gadgets are not part of the offering. All dimensions are from Masonry to Masonry. 1 sq. mtr. = 1.196 sq. yds. and 1 sq. mtr. = 10.764 sq. ft.

Floor Plan

DUPLEX PENTHOUSE FLOOR PLAN - UPPER LEVEL

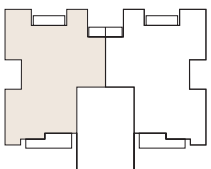
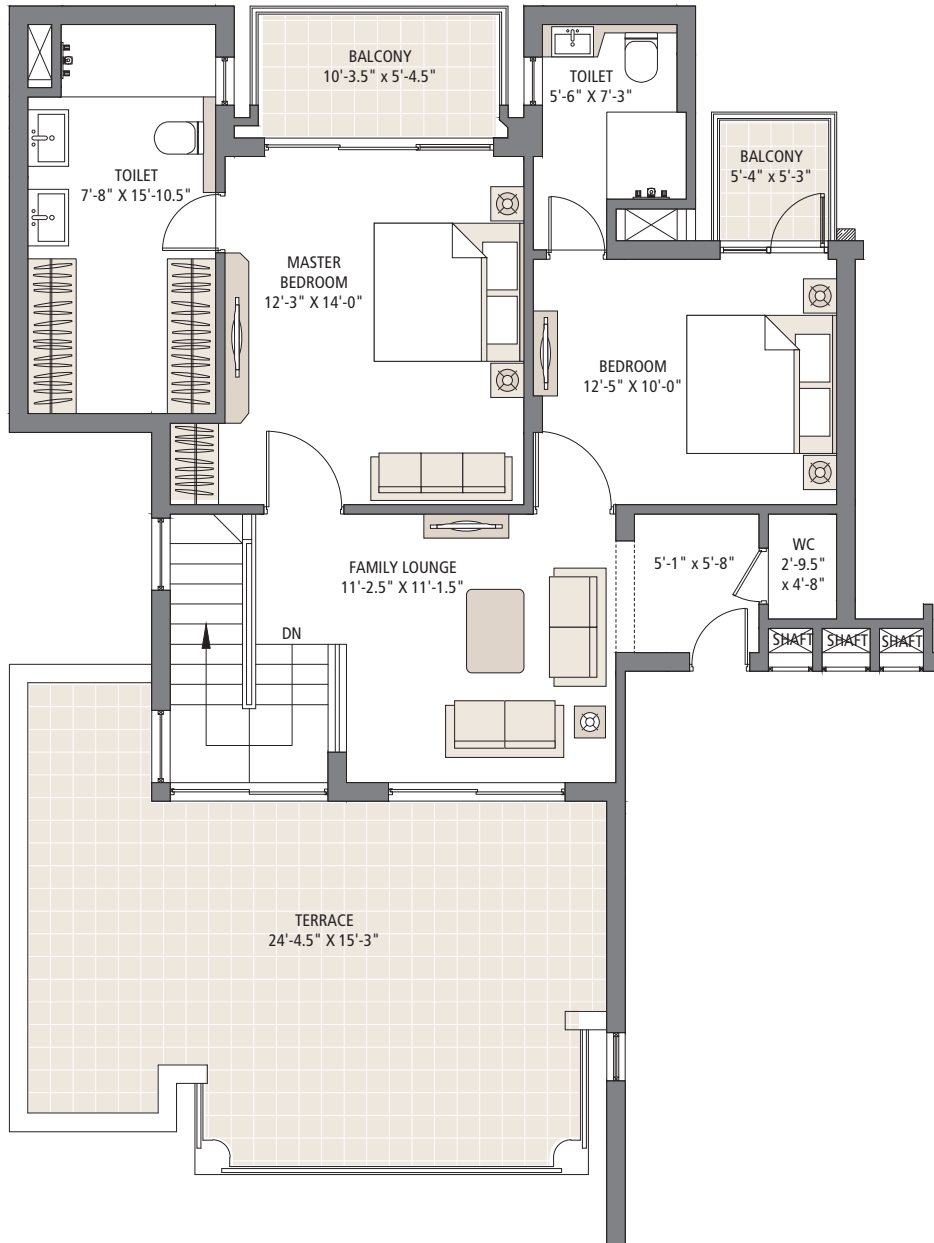
4 Bedrooms | 4 Bathrooms | Living | Dining | Family Lounge | Terrace

Carpet Area: 164.04 sq. mtr. (1,765.73 sq. ft.)

Balcony Area: 22.98 sq. mtr. (247.36 sq. ft.)

Terrace Area: 35.73 sq. mtr. (384.60 sq. ft.)

Super Area: 297.28 sq.mtr. (3,200 sq.ft.)



A revision of above plans has been applied with the authorities and same are also available for inspection before booking. Soft furnishing, cupboards, kitchen cabinets, furniture and gadgets are not part of the offering. All dimensions are from Masonry to Masonry. 1 sq. mtr. = 1.196 sq. yds. and 1 sq. mtr. = 10.764 sq. ft.

Specifications



Artistic Impression

Living Room/Dining/Lobby/Family Room

- Oil bound distemper (Walls)
- Oil bound distemper (Ceiling)
- Vitrified tile (Flooring)
- External windows - UPVC
- Entrance door - Seasoned hardwood frames with European style moulded shutter
- Internal door - Seasoned hardwood frames with flush shutters
- External doors - UPVC
- Modular switches

Master Bedroom

- Oil bound distemper (Walls)
- Oil bound distemper (Ceiling)
- Laminated wooden flooring
- External windows - UPVC
- Internal door - Seasoned hardwood frames with flush shutters
- External doors - UPVC
- Modular switches

Master Bathroom

- Combination of vitrified tiles and oil bound distemper (Walls)
- Oil bound distemper (Ceiling)
- Vitrified tile (Flooring)
- External windows - UPVC
- Internal door - Seasoned hardwood frames with flush shutters
- CP fittings, white Chinaware fixtures
- Modular switches

Kitchen

- Combination of tiles and oil bound distemper (Walls)
- Oil bound distemper (Ceiling)
- Vitrified tile (Flooring)
- External windows - UPVC
- Internal door - Seasoned hardwood frames with flush shutters
- External doors - UPVC
- Granite counter top, stainless steel single drain board sink with CP fittings
- Modular switches

Other Amenities

- Reserved car park
- Power backup of 5 KVA per apartment for simplex and 10 KVA for duplex
- Perimeter security

Other Bedroom(s)

- Oil bound distemper (Walls)
- Oil bound distemper (Ceiling)
- Laminated wooden flooring
- External windows - UPVC
- Internal door - Seasoned hardwood frames with flush shutters
- External doors - UPVC
- Modular switches

Other Bathrooms

- Combination of vitrified tiles and oil bound distemper (Walls)
- Oil bound distemper (Ceiling)
- Vitrified tile (Flooring)
- External windows - UPVC
- Internal door - Seasoned hardwood frames with flush shutters
- CP fittings, white Chinaware fixtures
- Modular switches

Balconies and Terraces

- Weather proof paint (Walls)
- Weather proof paint (Ceiling)
- Anti skid tiles flooring
- External windows - UPVC
- External doors - UPVC

Recreational/Sports Facilities

- Modern clubhouse, health club with gym, swimming pool, splash pool for kids, tennis courts, jogging track and dedicated childrens play area.

Step in to the world of Emaar

Emaar is a pioneer in shaping skylines and lifestyles worldwide, developing vibrant communities that have redefined real estate in 12 countries across the Middle East, Africa, Asia, Europe, USA and Canada. Emaar's iconic projects and scale of operations have made it one of the world's leading real estate companies.

In India, Emaar is committed to creating best in class real estate developments that would set unmatched benchmarks in thoughtful architecture, excellent engineering and impeccable execution.

Step in to experience the grandeur!





emaar-india.com